

**RPL4 Antibody (monoclonal) (M01)****Mouse monoclonal antibody raised against a partial recombinant RPL4.****Catalog # AT3709a****Specification**

---

**RPL4 Antibody (monoclonal) (M01) - Product Information**

Application	WB, IF, E
Primary Accession	<a href="#">P36578</a>
Other Accession	<a href="#">NM_000968</a>
Reactivity	Human, Mouse, Rat
Host	mouse
Clonality	Monoclonal
Isotype	IgG2a Kappa
Calculated MW	47697

**RPL4 Antibody (monoclonal) (M01) - Additional Information****Gene ID** 6124**Other Names**

60S ribosomal protein L4, 60S ribosomal protein L1, RPL4, RPL1

**Target/Specificity**

RPL4 (NP\_000959, 251 a.a. ~ 350 a.a) partial recombinant protein with GST tag. MW of the GST tag alone is 26 KDa.

**Dilution**

WB~~1:500~1000

IF~~1:50~200

E~~N/A

**Format**

Clear, colorless solution in phosphate buffered saline, pH 7.2 .

**Storage**

Store at -20°C or lower. Aliquot to avoid repeated freezing and thawing.

**Precautions**

RPL4 Antibody (monoclonal) (M01) is for research use only and not for use in diagnostic or therapeutic procedures.

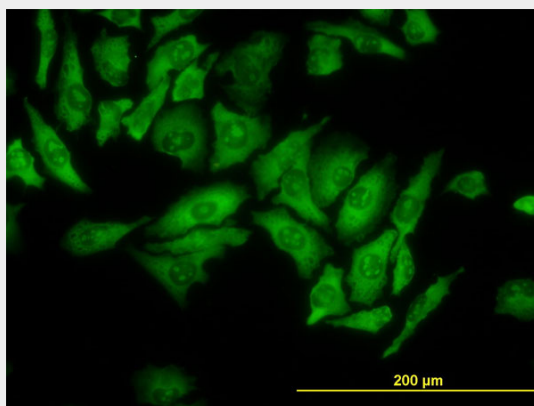
**RPL4 Antibody (monoclonal) (M01) - Protocols**

Provided below are standard protocols that you may find useful for product applications.

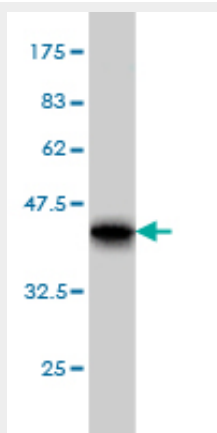
- [Western Blot](#)
- [Blocking Peptides](#)

- [Dot Blot](#)
- [Immunohistochemistry](#)
- [Immunofluorescence](#)
- [Immunoprecipitation](#)
- [Flow Cytometry](#)
- [Cell Culture](#)

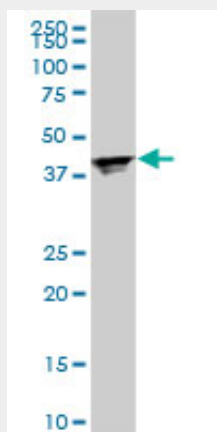
#### RPL4 Antibody (monoclonal) (M01) - Images



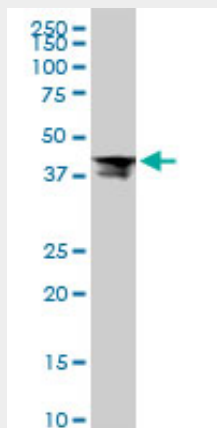
Immunofluorescence of monoclonal antibody to RPL4 on HeLa cell. [antibody concentration 10 ug/ml]



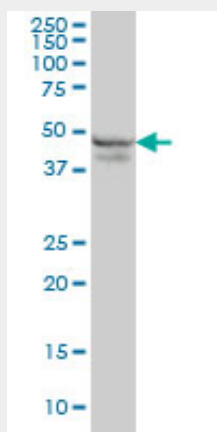
Antibody Reactive Against Recombinant Protein. Western Blot detection against Immunogen (36.74 KDa) .



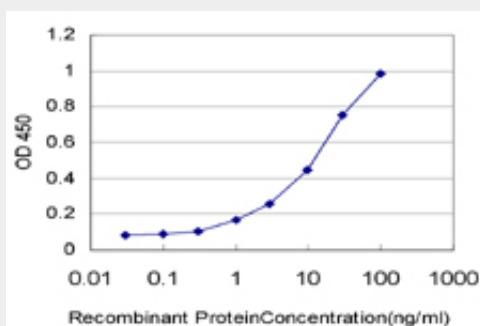
RPL4 monoclonal antibody (M01), clone 4A3. Western Blot analysis of RPL4 expression in PC-12 (Cat # AT3709a )



RPL4 monoclonal antibody (M01), clone 4A3. Western Blot analysis of RPL4 expression in Raw 264.7 (Cat # AT3709a )



RPL4 monoclonal antibody (M01), clone 4A3 Western Blot analysis of RPL4 expression in K-562 (Cat # AT3709a )



Detection limit for recombinant GST tagged RPL4 is approximately 0.3ng/ml as a capture antibody.

### RPL4 Antibody (monoclonal) (M01) - Background

Ribosomes, the organelles that catalyze protein synthesis, consist of a small 40S subunit and a large 60S subunit. Together these subunits are composed of 4 RNA species and approximately 80 structurally distinct proteins. This gene encodes a ribosomal protein that is a component of the 60S subunit. The protein belongs to the L4E family of ribosomal proteins. It is located in the cytoplasm. As is typical for genes encoding ribosomal proteins, there are multiple processed pseudogenes of

this gene dispersed through the genome.

#### **RPL4 Antibody (monoclonal) (M01) - References**

1. Transmembrane and coiled-coil domain family 1 is a novel protein of the endoplasmic reticulum. Zhang C, Kho YS, Wang Z, Chiang YT, Ng GK, Shaw PC, Wang Y, Qi RZ. *PLoS One*. 2014 Jan 14;9(1):e85206. doi: 10.1371/journal.pone.0085206. eCollection 2014 Jan 14.  
2. Shwachman-Bodian Diamond syndrome is a multi-functional protein implicated in cellular stress responses. Ball HL, Zhang B, Riches JJ, Gandhi R, Li J, Rommens JM, Myers JS. *Hum Mol Genet*. 2009 Oct 1;18(19):3684-95. Epub 2009 Jul 14.